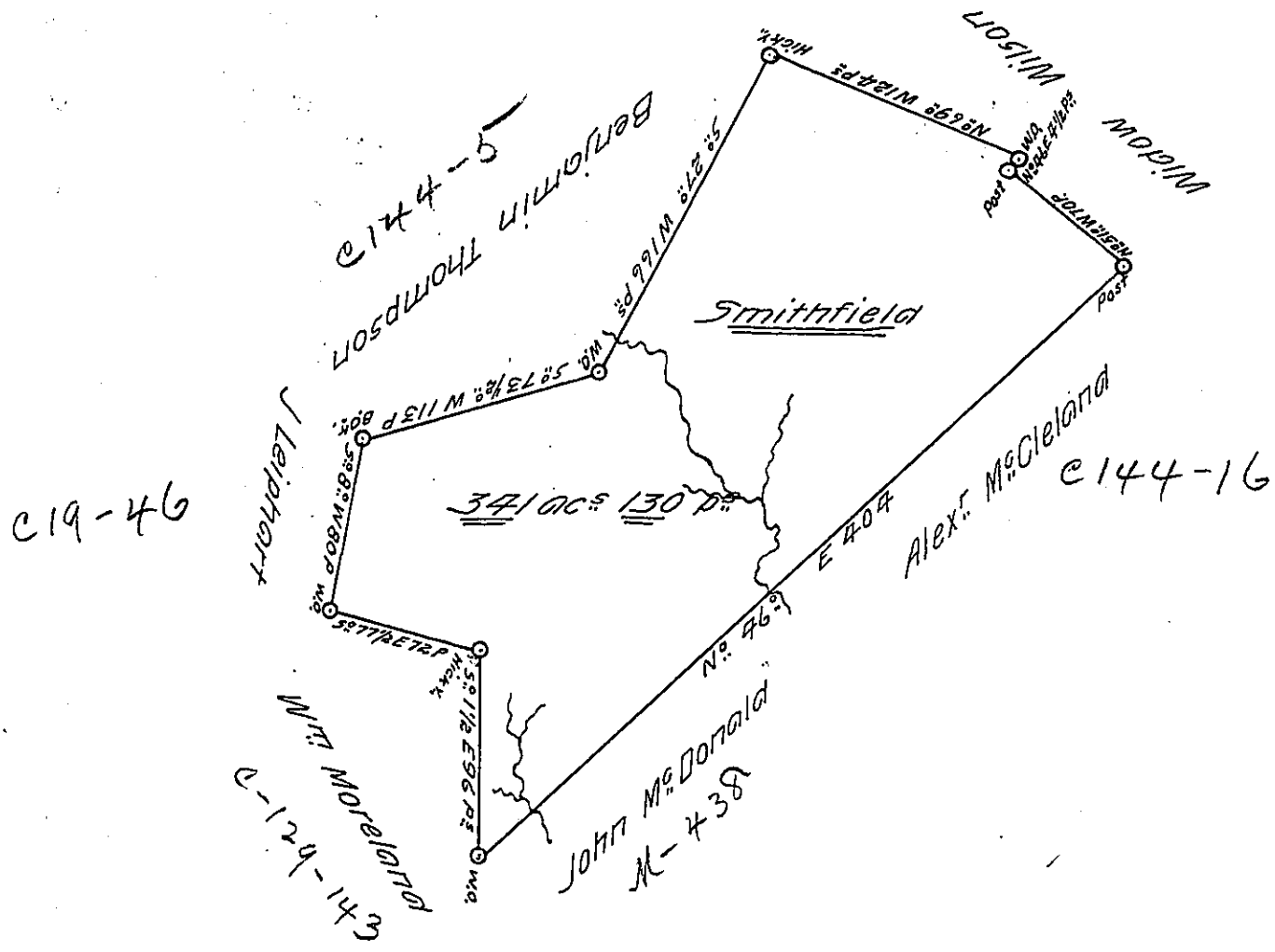


P-13-50

2-194
994



A draught of a survey called "Smithfield" situate on Robinson run in Washington County contain^g. 341 ac^s. 130 p^s. strict measure executed August 24th 1786 in consequence of a certift. for 400 ac^s granted to John Mc Donald by the commiss^{rs} appointed by Virginia to adjust the claims to unpatented lands in Monong^a. Yohg^a. and Ohio and duly entered &c the 27th April 1780 Ret^d 20 Feb-88

Jr^s. Lukens Esq. S. Gen^l.
 Presley Nevill } D.S.
 Matt^w. Ritchie }

IN TESTIMONY that the above is a copy of the original remaining on file in the Department of Internal Affairs of Pennsylvania, made conformably to an Act of Assembly approved the 16th day of February, 1833, I have hereunto set my Hand and caused the Seal of said Department to be affixed at Harrisburg, this twenty eighth day of November 1905

Samuel P. Parsons
 Secretary of Internal Affairs.